



Region Selected » Lower Left Latitude/Longitude: 16.962057576 N° , 98.764047089 E°
 Upper Right Latitude/Longitude: 22.962057576 N° , 104.764047089 E°



Situational Awareness

Additional information and analysis is available for Disaster Management Professionals. If you are a Disaster Management Professional and would like to apply for access, please [register here](#). Validation of registration information may take 24-48 hours.

Current Hazards:

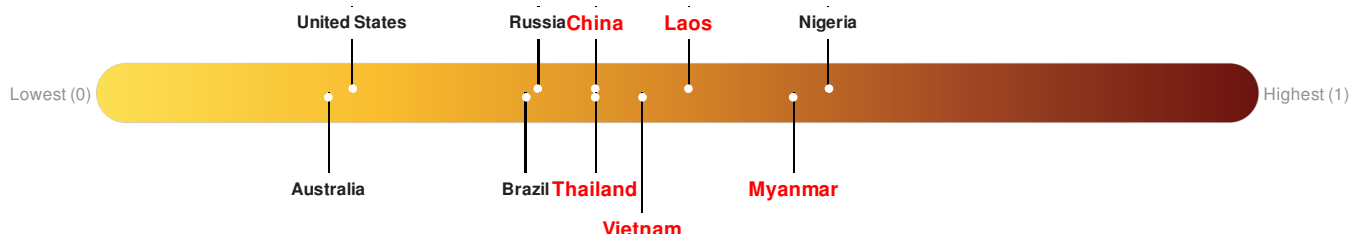
Active Wild Fire

Event	Severity	Date (UTC)	Name	Lat/Long
		23-Mar-2017 03:47:48	Wildfire - W of Louangphrabang - Laos	19.96° N / 101.76° E

Source: [PDC](#)

Lack of Resilience Index:

Lack of Resilience represents the combination of susceptibility to impact and the relative inability to absorb, respond to, and recover from negative impacts that do occur over the short term. **China** ranks 82 out of 165 on the Lack of Resilience index with a score of 0.43. **Laos** ranks 51 out of 165 on the Lack of Resilience index with a score of 0.51. **Myanmar** ranks 21 out of 165 on the Lack of Resilience index with a score of 0.6. **Thailand** ranks 82 out of 165 on the Lack of Resilience index with a score of 0.43. **Vietnam** ranks 61 out of 165 on the Lack of Resilience index with a score of 0.47.



China ranks 82 out of 165 on the Lack of Resilience Index. Based on the sub-component scores related to Vulnerability and Coping Capacity, the three thematic areas with the weakest relative scores are Environmental Capacity, Governance and Marginalization.

Laos ranks 51 out of 165 on the Lack of Resilience Index. Based on the sub-component scores related to Vulnerability and Coping Capacity, the three thematic areas with the weakest relative scores are Info Access Vulnerability, Population Pressures and Infrastructure.

Myanmar ranks 21 out of 165 on the Lack of Resilience Index. Based on the sub-component scores related to Vulnerability and Coping Capacity, the three thematic areas with the weakest relative scores are Environmental Capacity, Infrastructure and Governance.

Thailand ranks 82 out of 165 on the Lack of Resilience Index. Based on the sub-component scores related to Vulnerability and Coping Capacity, the three thematic areas with the weakest relative scores are Recent Disaster Impacts, Governance and Infrastructure.

Vietnam ranks 61 out of 165 on the Lack of Resilience Index. Based on the sub-component scores related to Vulnerability and Coping Capacity, the three

thematic areas with the weakest relative scores are Environmental Capacity, Marginalization and Governance.

Source: [PDC](#)

Regional Overview

Additional information and analysis is available for Disaster Management Professionals. If you are a Disaster Management Professional and would like to apply for access, please [register here](#). Validation of registration information may take 24-48 hours.

Population Data:

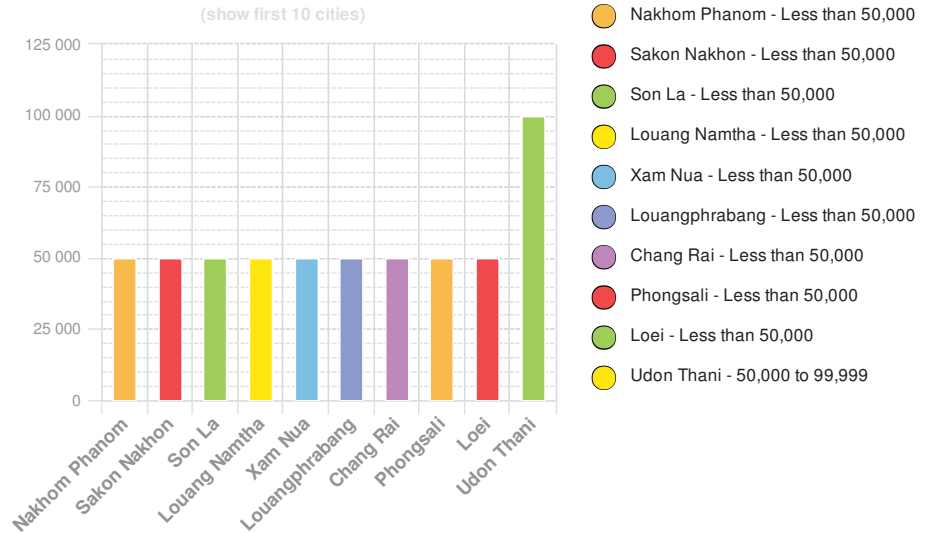
2011

Total: **22,065,432**

Max Density: **53,463**(ppl/km²)

Source: [iSciences](#)

Populated Areas:



Risk & Vulnerability

Additional information and analysis is available for Disaster Management Professionals. If you are a Disaster Management Professional and would like to apply for access, please [register here](#). Validation of registration information may take 24-48 hours.

Multi Hazard Risk Index:

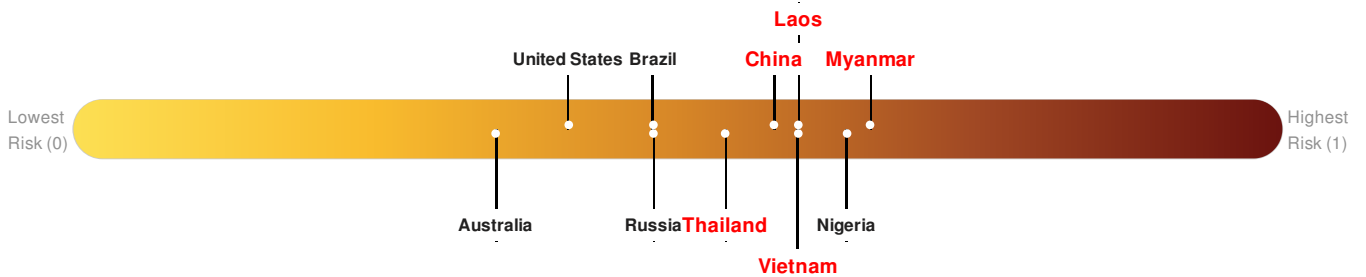
China ranks **32** out of **165** on the Multi-Hazard Risk Index with a score of 0.58. China is estimated to have relatively very high overall exposure, low vulnerability, and medium coping capacity.

Laos ranks **24** out of **165** on the Multi-Hazard Risk Index with a score of 0.6. Laos is estimated to have relatively high overall exposure, medium vulnerability, and medium coping capacity.

Myanmar ranks **7** out of **165** on the Multi-Hazard Risk Index with a score of 0.66. Myanmar is estimated to have relatively high overall exposure, medium vulnerability, and low coping capacity.

Thailand ranks **53** out of **165** on the Multi-Hazard Risk Index with a score of 0.54. Thailand is estimated to have relatively high overall exposure, low vulnerability, and medium coping capacity.

Vietnam ranks **24** out of **165** on the Multi-Hazard Risk Index with a score of 0.6. Vietnam is estimated to have relatively very high overall exposure, low vulnerability, and medium coping capacity.

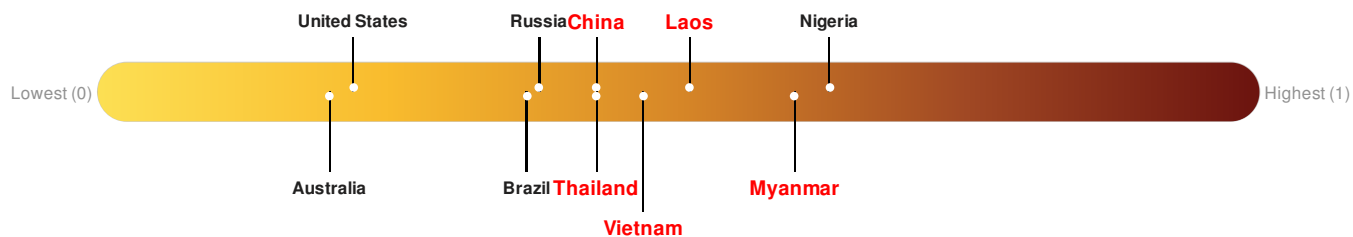


Source: [PDC](#)

Lack of Resilience Index:

Lack of Resilience represents the combination of susceptibility to impact and the relative inability to absorb, respond to, and recover from negative impacts that do occur over the short term. **China** ranks **82** out of **165** on the Lack of Resilience index with a score of 0.43. **Laos** ranks **51** out of **165** on the Lack of Resilience index with a score of 0.51. **Myanmar** ranks **21** out of **165** on the Lack of Resilience index with a score of 0.6. **Thailand** ranks **82** out of **165** on the

Lack of Resilience index with a score of 0.43. **Vietnam** ranks 61 out of 165 on the Lack of Resilience index with a score of 0.47.



China ranks 82 out of 165 on the Lack of Resilience Index. Based on the sub-component scores related to Vulnerability and Coping Capacity, the three thematic areas with the weakest relative scores are Environmental Capacity, Governance and Marginalization.

Laos ranks 51 out of 165 on the Lack of Resilience Index. Based on the sub-component scores related to Vulnerability and Coping Capacity, the three thematic areas with the weakest relative scores are Info Access Vulnerability, Population Pressures and Infrastructure.

Myanmar ranks 21 out of 165 on the Lack of Resilience Index. Based on the sub-component scores related to Vulnerability and Coping Capacity, the three thematic areas with the weakest relative scores are Environmental Capacity, Infrastructure and Governance.

Thailand ranks 82 out of 165 on the Lack of Resilience Index. Based on the sub-component scores related to Vulnerability and Coping Capacity, the three thematic areas with the weakest relative scores are Recent Disaster Impacts, Governance and Infrastructure.

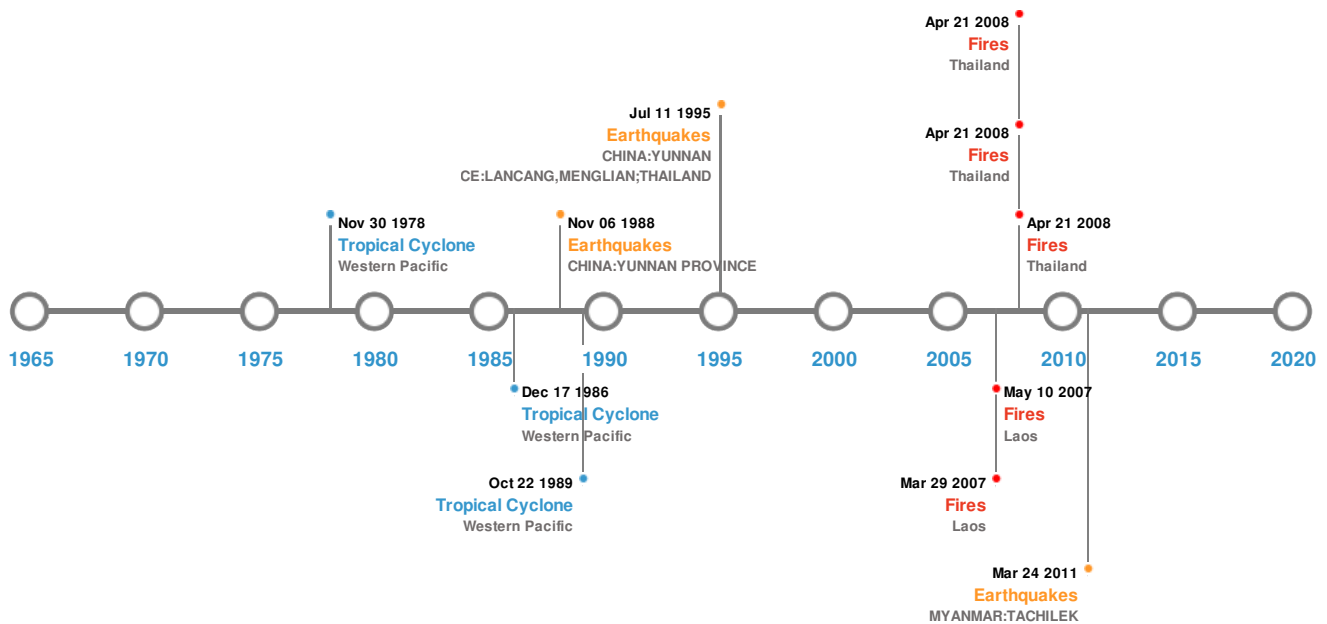
Vietnam ranks 61 out of 165 on the Lack of Resilience Index. Based on the sub-component scores related to Vulnerability and Coping Capacity, the three thematic areas with the weakest relative scores are Environmental Capacity, Marginalization and Governance.

Source: [PDC](#)

Historical Hazards

Additional information and analysis is available for Disaster Management Professionals. If you are a Disaster Management Professional and would like to apply for access, please [register here](#). Validation of registration information may take 24-48 hours.

Historical Hazards:



Earthquakes:

5 Largest Earthquakes (Resulting in significant damage or deaths)

Event	Date (UTC)	Magnitude	Depth (Km)	Location	Lat/Long
	06-Nov-1988 00:13:00	7.30	18	CHINA: YUNNAN PROVINCE	22.79° N / 99.61° E
	24-Mar-2011 13:55:12	7.20	8	MYANMAR: TACHILEK	20.69° N / 99.82° E
	02-Feb-1950 00:19:00	7.00	-	CHINA: YUNNAN PROVINCE	21.7° N / 100.1° E
	26-Dec-1941 00:14:00	7.00	-	CHINA: YUNNAN PROVINCE	22.7° N / 99.9° E
	11-Jul-1995 00:21:00	6.80	13	CHINA: YUNNAN PROVINCE: LANCANG, MENGLIAN; THAILAND	21.97° N / 99.2° E

Source: [Earthquakes](#)

Wildfires:

5 Largest Wildfires



Event	Start/End Date(UTC)	Size (sq. km.)	Location	Mean Lat/Long
	15-Mar-2008 06:45:00 - 21-Apr-2008 07:05:00	69.10	Thailand	18.68° N / 100.38° E
	17-Feb-2007 00:00:00 - 10-May-2007 00:00:00	56.60	Laos	18.66° N / 101.6° E

Event	Start/End Date(UTC)	Size (sq. km.)	Location	Mean Lat/Long
	15-Mar-2008 06:45:00 - 21-Apr-2008 07:05:00	39.40	Thailand	18.71° N / 100.83° E
	13-Mar-2008 07:00:00 - 21-Apr-2008 07:05:00	37.00	Thailand	18.64° N / 100.24° E
	15-Feb-2007 00:00:00 - 29-Mar-2007 00:00:00	29.00	Laos	19.37° N / 101.76° E

Source: [Wildfires](#)

Tropical Cyclones:

5 Largest Tropical Cyclones

Event	Name	Start/End Date(UTC)	Max Wind Speed (mph)	Min Pressure (mb)	Location	Lat/Long
	IDA	18-Aug-1954 18:00:00 - 31-Aug-1954 12:00:00	173	No Data	Western Pacific	17.43° N / 129.25° E
	BETTY	07-Aug-1987 06:00:00 - 17-Aug-1987 06:00:00	161	No Data	Western Pacific	13.64° N / 117.2° E
	ELSIE	13-Oct-1989 06:00:00 - 22-Oct-1989 12:00:00	161	No Data	Western Pacific	15.68° N / 120.75° E
	KATE	16-Sep-1955 12:00:00 - 26-Sep-1955 18:00:00	150	No Data	Western Pacific	14.78° N / 128.4° E
	HOPE	24-Jul-1979 12:00:00 - 08-Aug-1979 12:00:00	150	No Data	Western Pacific	15.98° N / 116.2° E

Source: [Tropical Cyclones](#)

Disclosures

* As defined by the source ([Dartmouth Flood Observatory](#), University of Colorado), Flood Magnitude = LOG(Duration x Severity x Affected Area). Severity classes are based on estimated recurrence intervals and other criteria.

The information and data contained in this product are for reference only. Pacific Disaster Center (PDC) does not guarantee the accuracy of this data. Refer to original sources for any legal restrictions. Please refer to PDC Terms of Use for PDC generated information and products. The names, boundaries, colors, denominations and any other information shown on the associated maps do not imply, on the part of PDC, any judgment on the legal status of any territory, or any endorsement or acceptance of such boundaries.