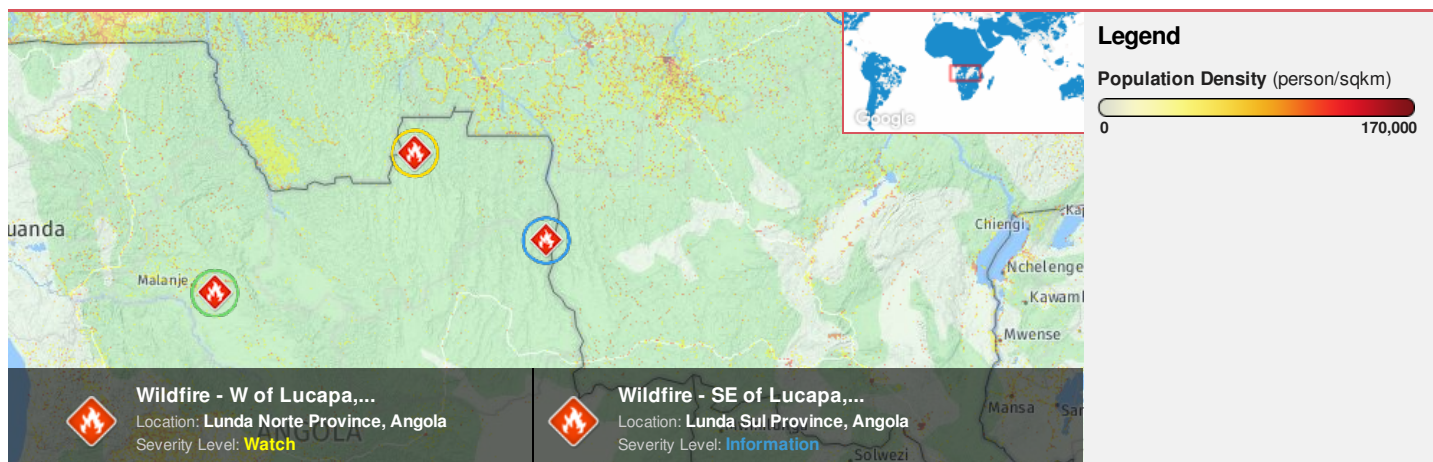




Region Selected » Lower Left Latitude/Longitude: -11.866659912 N° , 18.744542266 E°
 Upper Right Latitude/Longitude: -5.866659911999999 N° , 24.744542266 E°



Situational Awareness

Additional information and analysis is available for Disaster Management Professionals. If you are a Disaster Management Professional and would like to apply for access, please [register here](#). Validation of registration information may take 24-48 hours.

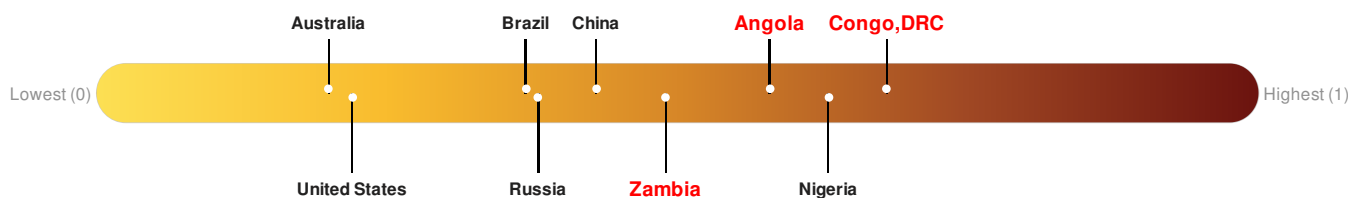
Current Hazards:

| Active Wild Fire | | | | |
|------------------|----------|----------------------|---|--------------------|
| Event | Severity | Date (UTC) | Name | Lat/Long |
| | | 27-Jun-2017 03:59:46 | Wildfire - SE of Lucapa, Lunda Norte - Angola | 8.87° S / 21.74° E |
| | | 17-Jun-2017 03:57:52 | Wildfire - W of Lucapa, Lunda Norte - Angola | 7.55° S / 19.74° E |

Source: [PDC](#)

Lack of Resilience Index:

Lack of Resilience represents the combination of susceptibility to impact and the relative inability to absorb, respond to, and recover from negative impacts that do occur over the short term. **Angola** ranks 26 out of 165 on the Lack of Resilience index with a score of 0.58. **Zambia** ranks 56 out of 165 on the Lack of Resilience index with a score of 0.49. **Congo, DRC** ranks 3 out of 165 on the Lack of Resilience index with a score of 0.68.



Angola ranks 26 out of 165 on the Lack of Resilience Index. Based on the sub-component scores related to Vulnerability and Coping Capacity, the three thematic areas with the weakest relative scores are Population Pressures, Vulnerability Health Status and Infrastructure.

Zambia ranks 56 out of 165 on the Lack of Resilience Index. Based on the sub-component scores related to Vulnerability and Coping Capacity, the three thematic areas with the weakest relative scores are Population Pressures, Vulnerability Health Status and Infrastructure.

Congo, DRC ranks 3 out of 165 on the Lack of Resilience Index. Based on the sub-component scores related to Vulnerability and Coping Capacity, the three thematic areas with the weakest relative scores are Conflict Impacts, Vulnerability Health Status and Infrastructure.

Source: [PDC](#)

Regional Overview

Additional information and analysis is available for Disaster Management Professionals. If you are a Disaster Management Professional and would like to apply for access, please [register here](#). Validation of registration information may take 24-48 hours.

Population Data:

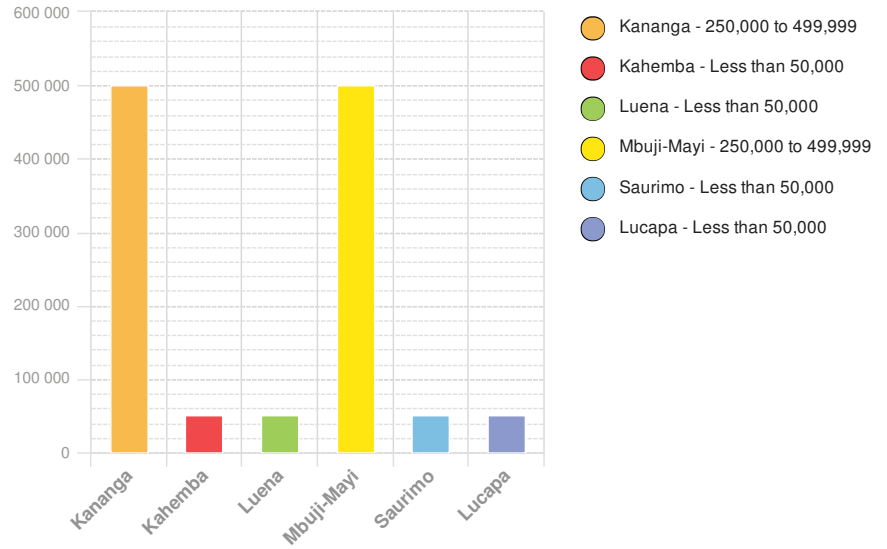
2011

Total: 8,692,856

Max Density: 43,600 (ppl/km²)

Source: [iSciences](#)

Populated Areas:



Risk & Vulnerability

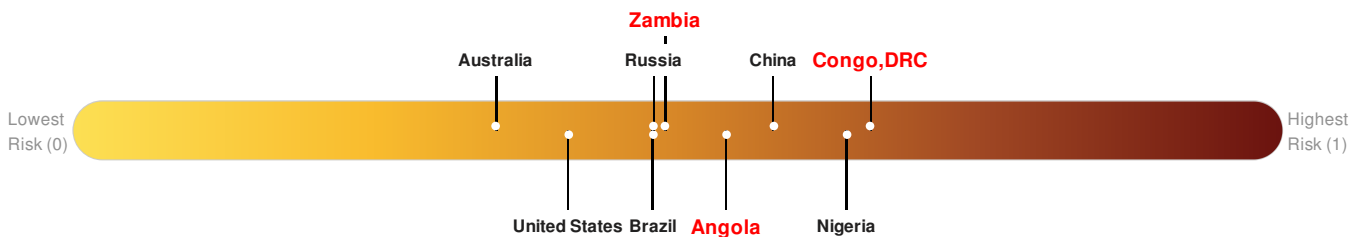
Additional information and analysis is available for Disaster Management Professionals. If you are a Disaster Management Professional and would like to apply for access, please [register here](#). Validation of registration information may take 24-48 hours.

Multi Hazard Risk Index:

Angola ranks 53 out of 165 on the Multi-Hazard Risk Index with a score of 0.54. Angola is estimated to have relatively medium overall exposure, medium vulnerability, and low coping capacity.

Zambia ranks 81 out of 165 on the Multi-Hazard Risk Index with a score of 0.49. Zambia is estimated to have relatively medium overall exposure, medium vulnerability, and medium coping capacity.

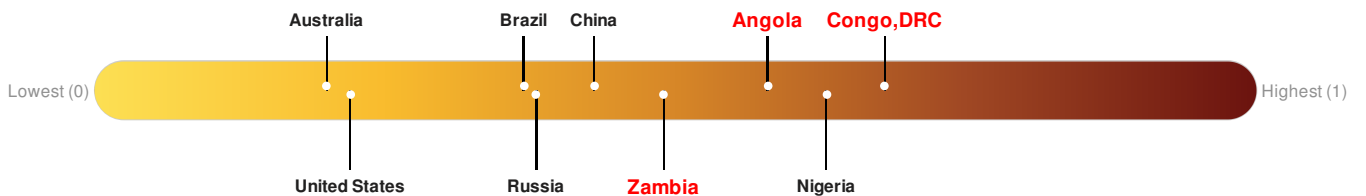
Congo, DRC ranks 7 out of 165 on the Multi-Hazard Risk Index with a score of 0.66. Congo, DRC is estimated to have relatively high overall exposure, high vulnerability, and low coping capacity.



Source: [PDC](#)

Lack of Resilience Index:

Lack of Resilience represents the combination of susceptibility to impact and the relative inability to absorb, respond to, and recover from negative impacts that do occur over the short term. **Angola** ranks 26 out of 165 on the Lack of Resilience index with a score of 0.58. **Zambia** ranks 56 out of 165 on the Lack of Resilience index with a score of 0.49. **Congo, DRC** ranks 3 out of 165 on the Lack of Resilience index with a score of 0.68.



Angola ranks 26 out of 165 on the Lack of Resilience Index. Based on the sub-component scores related to Vulnerability and Coping Capacity, the three

thematic areas with the weakest relative scores are Population Pressures, Vulnerability Health Status and Infrastructure.

Zambia ranks **56** out of **165** on the Lack of Resilience Index. Based on the sub-component scores related to Vulnerability and Coping Capacity, the three thematic areas with the weakest relative scores are Population Pressures, Vulnerability Health Status and Infrastructure.

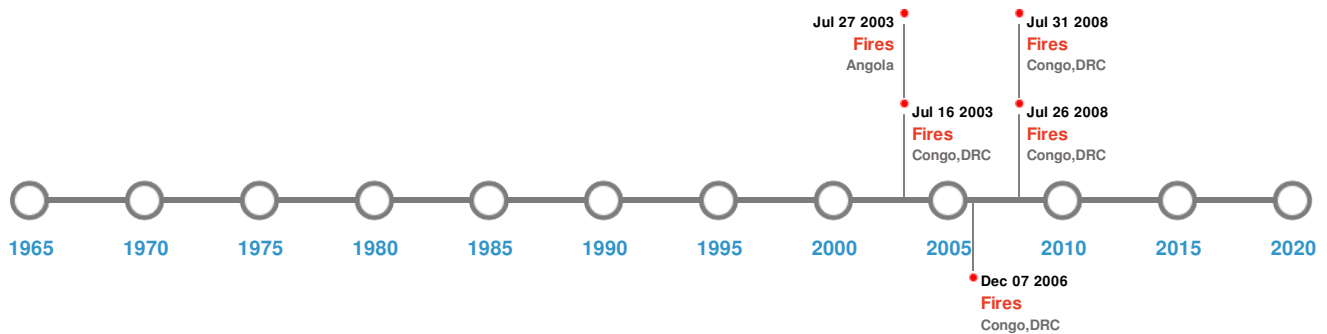
Congo, DRC ranks **3** out of **165** on the Lack of Resilience Index. Based on the sub-component scores related to Vulnerability and Coping Capacity, the three thematic areas with the weakest relative scores are Conflict Impacts, Vulnerability Health Status and Infrastructure.

Source: [PDC](#)

Historical Hazards

Additional information and analysis is available for Disaster Management Professionals. If you are a Disaster Management Professional and would like to apply for access, please [register here](#). Validation of registration information may take 24-48 hours.

Historical Hazards:



Wildfires:

5 Largest Wildfires

| Event | Start/End Date(UTC) | Size (sq. km.) | Location | Mean Lat/Long |
|---|---|----------------|------------|--------------------|
|  | 13-Jun-2003 00:00:00 - 16-Jul-2003 00:00:00 | 65.30 | Congo, DRC | 6.71° S / 18.7° E |
|  | 15-Jun-2008 12:00:00 - 31-Jul-2008 12:15:00 | 50.20 | Congo, DRC | 7.7° S / 22.9° E |
|  | 25-Jun-2007 00:00:00 - 07-Aug-2007 00:00:00 | 41.40 | Congo, DRC | 7.61° S / 22.85° E |
|  | 23-May-2003 00:00:00 - 27-Jul-2003 00:00:00 | 40.30 | Angola | 8.68° S / 21.4° E |
|  | 09-May-2008 21:05:00 - 26-Jul-2008 11:55:00 | 38.70 | Congo, DRC | 7.68° S / 23.09° E |

Source: [Wildfires](#)

Disclosures

* As defined by the source ([Dartmouth Flood Observatory](#), University of Colorado), Flood Magnitude = LOG(Duration x Severity x Affected Area). Severity classes are based on estimated recurrence intervals and other criteria.

The information and data contained in this product are for reference only. Pacific Disaster Center (PDC) does not guarantee the accuracy of this data. Refer to original sources for any legal restrictions. Please refer to PDC Terms of Use for PDC generated information and products. The names, boundaries, colors, denominations and any other information shown on the associated maps do not imply, on the part of PDC, any judgment on the legal status of any territory, or any endorsement or acceptance of such boundaries.