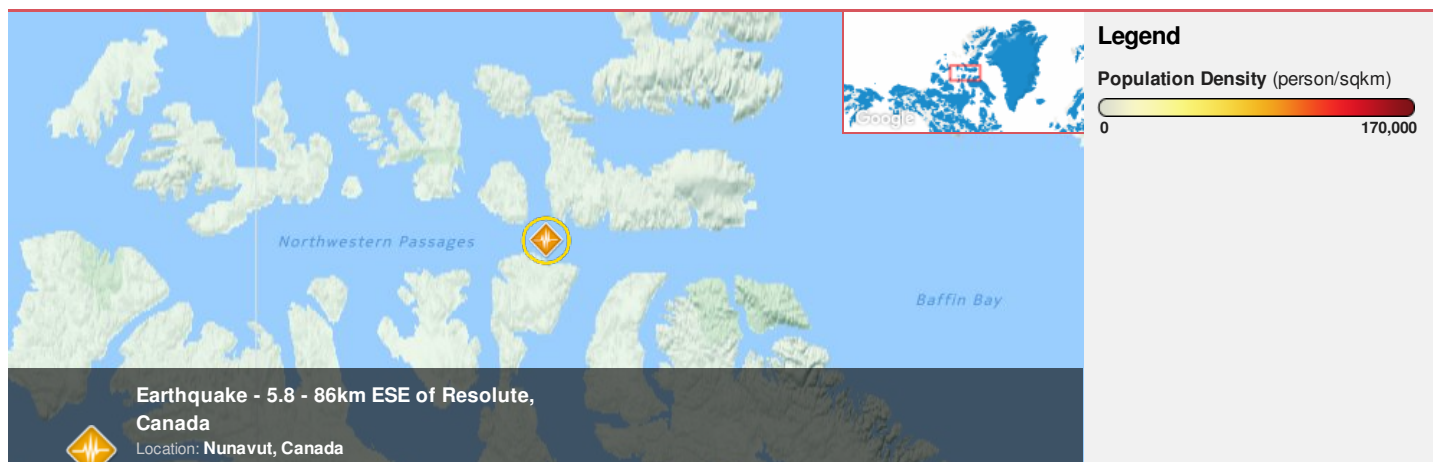




**Region Selected** » Lower Left Latitude/Longitude: 71.3204 N° , -95.3053 E°  
 Upper Right Latitude/Longitude: 77.3204 N° , -89.3053 E°



**Earthquake - 5.8 - 86km ESE of Resolute, Canada**  
 Location: Nunavut, Canada

### Situational Awareness

Additional information and analysis is available for Disaster Management Professionals. If you are a Disaster Management Professional and would like to apply for access, please [register here](#). Validation of registration information may take 24-48 hours.

### Current Hazards:

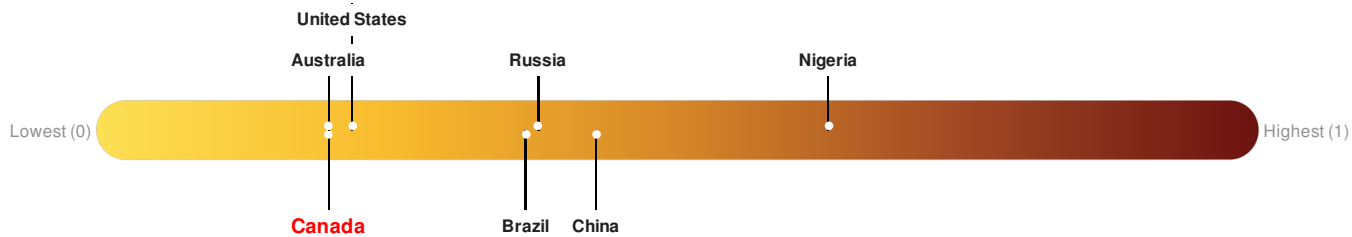
#### Recent Earthquakes

Event	Severity	Date (UTC)	Magnitude	Depth (km)	Location	Lat/Long
		08-Jan-2017 23:56:31	5.8	18.93	86km ESE of Resolute, Canada	74.32° N / 92.31° W

Source: [PDC](#)

### Lack of Resilience Index:

Lack of Resilience represents the combination of susceptibility to impact and the relative inability to absorb, respond to, and recover from negative impacts that do occur over the short term. **Canada** ranks **154** out of **165** on the Lack of Resilience index with a score of 0.2.



**Canada** ranks **154** out of **165** on the Lack of Resilience Index. Based on the sub-component scores related to Vulnerability and Coping Capacity, the three thematic areas with the weakest relative scores are Environmental Capacity, Population Pressures and Economic Constraints.

Source: [PDC](#)

### Regional Overview

Additional information and analysis is available for Disaster Management Professionals. If you are a Disaster Management Professional and would like to apply for access, please [register here](#). Validation of registration information may take 24-48 hours.

### Population Data:

### Populated Areas:

Total: 249

Max Density: 975(ppl/km<sup>2</sup>)

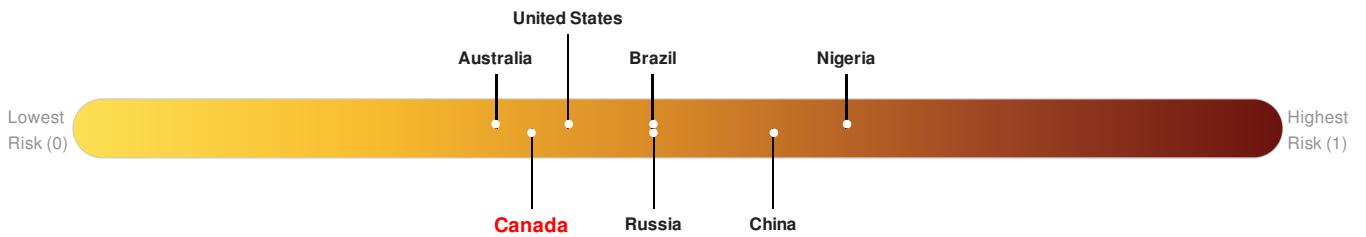
Source: [iSciences](#)

## Risk & Vulnerability

Additional information and analysis is available for Disaster Management Professionals. If you are a Disaster Management Professional and would like to apply for access, please [register here](#). Validation of registration information may take 24-48 hours.

### Multi Hazard Risk Index:

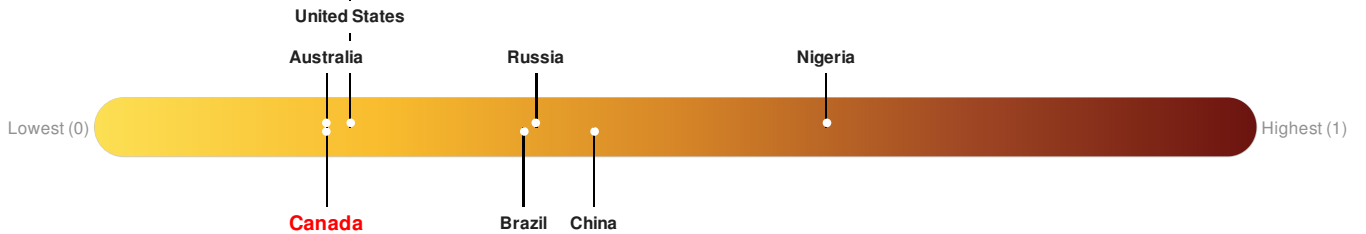
**Canada** ranks 132 out of 165 on the Multi-Hazard Risk Index with a score of 0.38. Canada is estimated to have relatively high overall exposure, low vulnerability, and very high coping capacity.



Source: [PDC](#)

### Lack of Resilience Index:

Lack of Resilience represents the combination of susceptibility to impact and the relative inability to absorb, respond to, and recover from negative impacts that do occur over the short term. **Canada** ranks 154 out of 165 on the Lack of Resilience index with a score of 0.2.



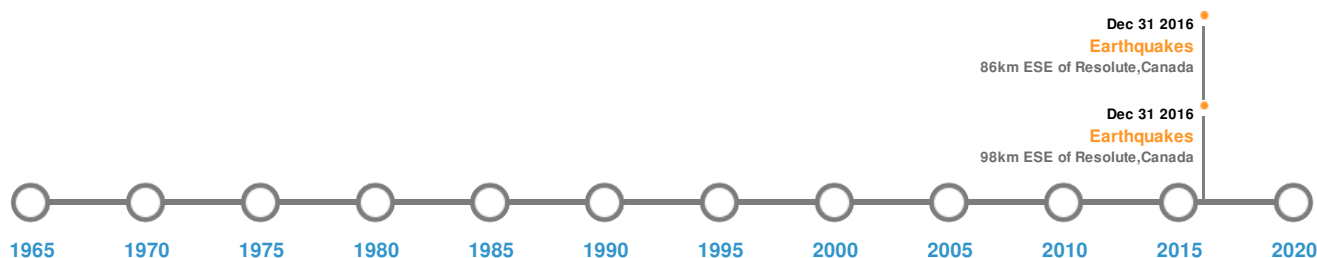
**Canada** ranks 154 out of 165 on the Lack of Resilience Index. Based on the sub-component scores related to Vulnerability and Coping Capacity, the three thematic areas with the weakest relative scores are Environmental Capacity, Population Pressures and Economic Constraints.

Source: [PDC](#)

## Historical Hazards


Additional information and analysis is available for Disaster Management Professionals. If you are a Disaster Management Professional and would like to apply for access, please [register here](#). Validation of registration information may take 24-48 hours.

### Historical Hazards:



### Earthquakes:

#### 5 Largest Earthquakes (Resulting in significant damage or deaths)

Event	Date (UTC)	Magnitude	Depth (Km)	Location	Lat/Long
	08-Jan-2017 23:47:12	5.80	18.93	86km ESE of Resolute, Canada	74.32° N / 92.31° W
	08-Jan-2017 23:47:07	5.80	1	98km ESE of Resolute, Canada	74.4° N / 91.74° W

Source: [Earthquakes](#)

### Disclosures

\* As defined by the source ([Dartmouth Flood Observatory](#), University of Colorado), Flood Magnitude = LOG(Duration x Severity x Affected Area). Severity classes are based on estimated recurrence intervals and other criteria.

The information and data contained in this product are for reference only. Pacific Disaster Center (PDC) does not guarantee the accuracy of this data. Refer to original sources for any legal restrictions. Please refer to PDC Terms of Use for PDC generated information and products. The names, boundaries, colors, denominations and any other information shown on the associated maps do not imply, on the part of PDC, any judgment on the legal status of any territory, or any endorsement or acceptance of such boundaries.