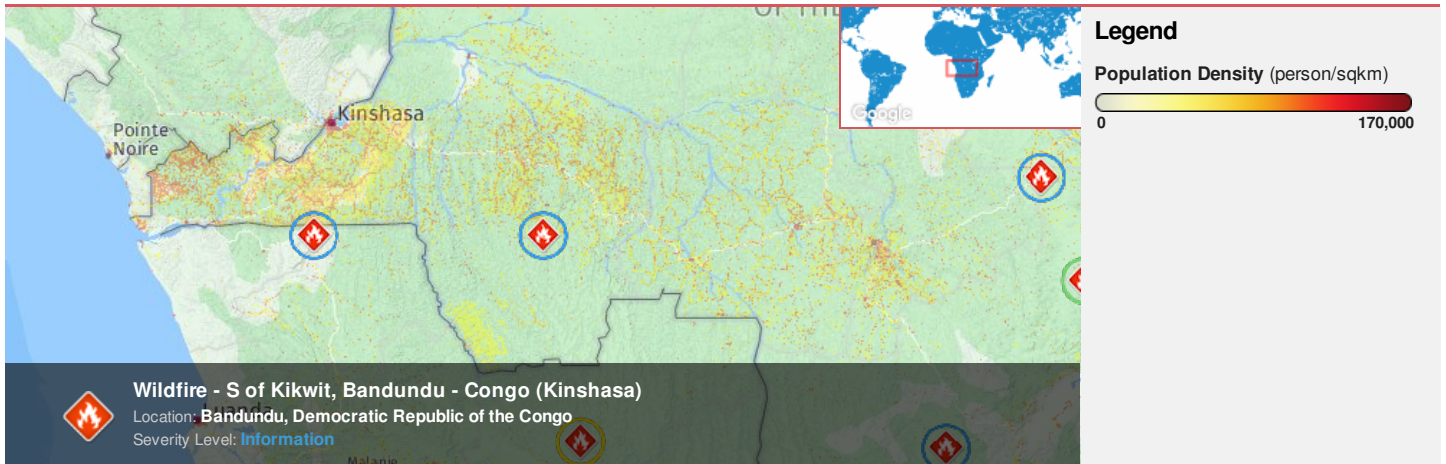


Region Selected » Lower Left Latitude/Longitude: -9.030554115000001 N° , 15.510780311000001 E°
Upper Right Latitude/Longitude: -3.030554115 N° , 21.510780311 E°



Situational Awareness

Additional information and analysis is available for Disaster Management Professionals. If you are a Disaster Management Professional and would like to apply for access, please [register here](#). Validation of registration information may take 24-48 hours.

Current Hazards:

Active Wild Fire				
Event	Severity	Date (UTC)	Name	Lat/Long
		19-Jul-2018 04:00:48	Wildfire - S of Kikwit, Bandundu - Congo (Kinshasa)	6.03° S / 18.51° E

Source: [PDC](#)

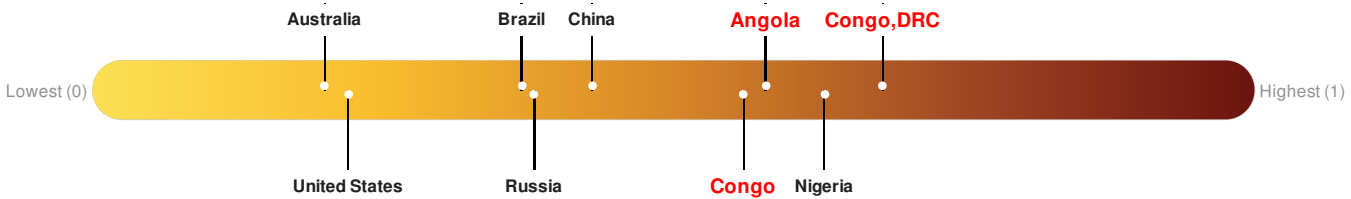
Lack of Resilience Index:

The Lack of Resilience Index assesses the susceptibility to impact and the short-term inability to absorb, respond to, and recover from disruptions to a country's normal function.

Angola ranks **26** out of **165** countries assessed for Lack of Resilience. Angola is less resilient than 85% of countries assessed. This indicates that Angola has medium susceptibility to negative impacts, and is more able to respond to and recover from a disruption to normal function.

Congo ranks **33** out of **165** countries assessed for Lack of Resilience. Congo is less resilient than 80% of countries assessed. This indicates that Congo has medium susceptibility to negative impacts, and is more able to respond to and recover from a disruption to normal function.

Congo, DRC ranks **3** out of **165** countries assessed for Lack of Resilience. Congo, DRC is less resilient than 99% of countries assessed. This indicates that Congo, DRC has high susceptibility to negative impacts, and is more able to respond to and recover from a disruption to normal function.



Source: [PDC](#)

Regional Overview

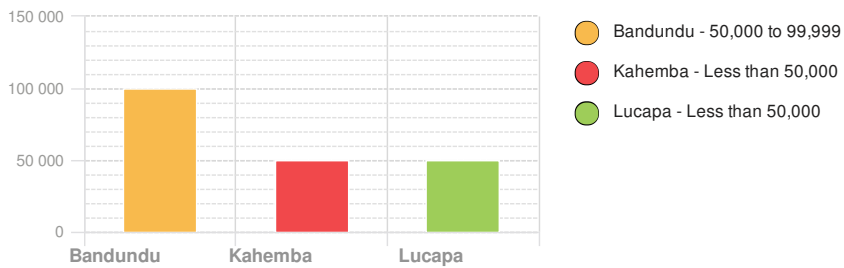
Additional information and analysis is available for Disaster Management Professionals. If you are a Disaster Management Professional and would like to apply for access, please [register here](#). Validation of registration information may take 24-48 hours.

Population Data:

2011

Total: 10,843,486
Max Density: 83,416(ppl/km²)

Populated Areas:



Source: [iSciences](#)

Risk & Vulnerability

Additional information and analysis is available for Disaster Management Professionals. If you are a Disaster Management Professional and would like to apply for access, please [register here](#). Validation of registration information may take 24-48 hours.

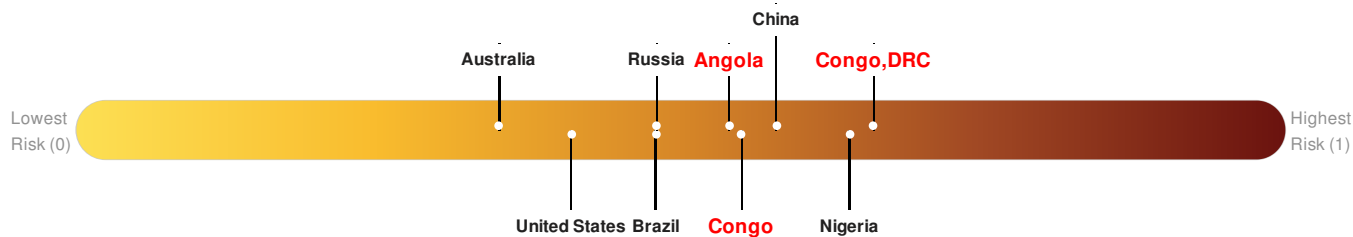
Multi Hazard Risk Index:

The Multi Hazard Risk index assesses the likelihood of losses or disruptions to a country's normal function due to the interaction between exposure to multiple hazards (tropical cyclone winds, earthquake, flood and tsunامي), socioeconomic vulnerability, and coping capacity

Multi-Hazard Exposure **Angola** ranks 53 out of 165 countries assessed for Multi Hazard Risk. Angola has a Multi Hazard Risk higher than 68% of countries assessed. This indicates that Angola has more likelihood of loss and/or disruption to normal function if exposed to a hazard.

Multi-Hazard Exposure **Congo** ranks 48 out of 165 countries assessed for Multi Hazard Risk. Congo has a Multi Hazard Risk higher than 71% of countries assessed. This indicates that Congo has more likelihood of loss and/or disruption to normal function if exposed to a hazard.

Multi-Hazard Exposure **Congo, DRC** ranks 7 out of 165 countries assessed for Multi Hazard Risk. Congo, DRC has a Multi Hazard Risk higher than 96% of countries assessed. This indicates that Congo, DRC has more likelihood of loss and/or disruption to normal function if exposed to a hazard.



Source: [PDC](#)

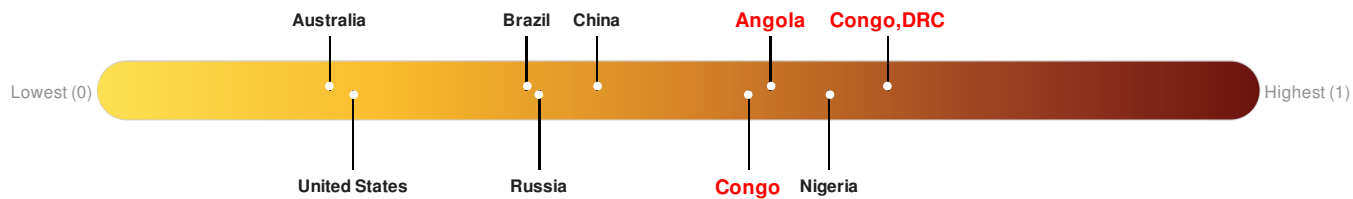
Lack of Resilience Index:

The Lack of Resilience Index assesses the susceptibility to impact and the short-term inability to absorb, respond to, and recover from disruptions to a country's normal function.

Angola ranks 26 out of 165 countries assessed for Lack of Resilience. Angola is less resilient than 85% of countries assessed. This indicates that Angola has medium susceptibility to negative impacts, and is more able to respond to and recover from a disruption to normal function.

Congo ranks 33 out of 165 countries assessed for Lack of Resilience. Congo is less resilient than 80% of countries assessed. This indicates that Congo has medium susceptibility to negative impacts, and is more able to respond to and recover from a disruption to normal function.

Congo, DRC ranks 3 out of 165 countries assessed for Lack of Resilience. Congo, DRC is less resilient than 99% of countries assessed. This indicates that Congo, DRC has high susceptibility to negative impacts, and is more able to respond to and recover from a disruption to normal function.

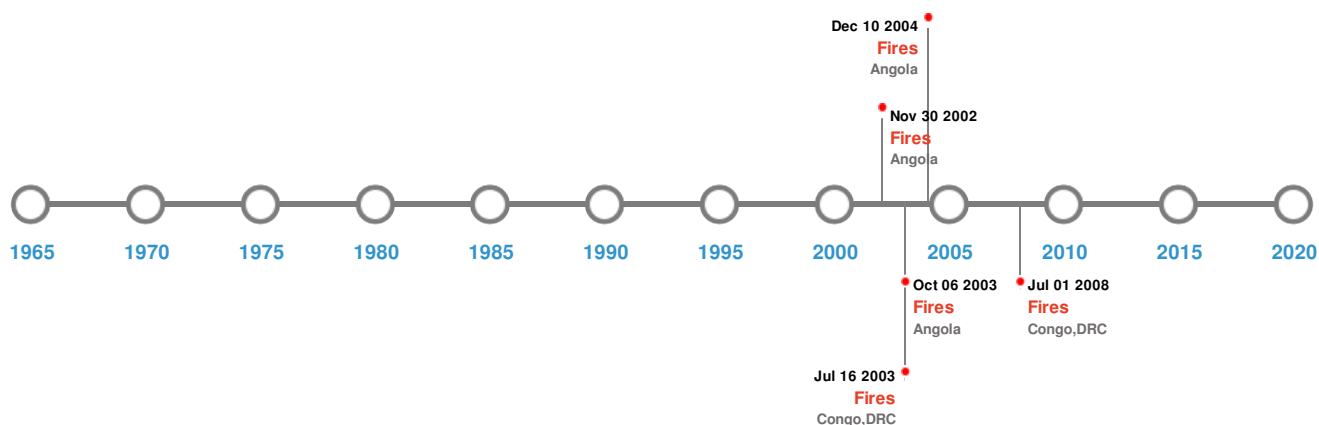


Source: [PDC](#)

Historical Hazards

Additional information and analysis is available for Disaster Management Professionals. If you are a Disaster Management Professional and would like to apply for access, please [register here](#). Validation of registration information may take 24-48 hours.

Historical Hazards:



Wildfires:

5 Largest Wildfires

Event	Start/End Date(UTC)	Size (sq. km.)	Location	Mean Lat/Long
	11-May-2005 00:00:00 - 10-Sep-2005 00:00:00	72.20	Angola	8.58° S / 16.88° E
	13-Jun-2003 00:00:00 - 16-Jul-2003 00:00:00	65.30	Congo, DRC	6.71° S / 18.7° E
	06-May-2003 00:00:00 - 09-Sep-2003 00:00:00	56.80	Angola	8.87° S / 17.17° E
	16-Jul-2003 00:00:00 - 06-Oct-2003 00:00:00	52.50	Angola	8.55° S / 16.73° E
	09-Jun-2008 00:20:00 - 01-Jul-2008 12:00:00	47.60	Congo, DRC	6.59° S / 18.46° E

Source: [Wildfires](#)

Disclosures

* As defined by the source ([Dartmouth Flood Observatory](#), University of Colorado), Flood Magnitude = LOG(Duration x Severity x Affected Area). Severity classes are based on estimated recurrence intervals and other criteria.

The information and data contained in this product are for reference only. Pacific Disaster Center (PDC) does not guarantee the accuracy of this data. Refer to original sources for any legal restrictions. Please refer to PDC Terms of Use for PDC generated information and products. The names, boundaries, colors, denominations and any other information shown on the associated maps do not imply, on the part of PDC, any judgment on the legal status of any territory, or any endorsement or acceptance of such boundaries.